

Broadband Service Inventory

Advertised Speeds of at Least
768 kbps Downstream
and 200 kbps Upstream

Chautauqua County
Kansas

Updated October 1, 2011

BETA Version

Submit questions or recommended changes to:
maps@connectkansas.org

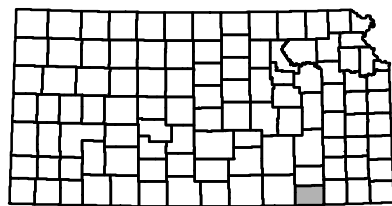


As required by the US Department of Commerce's State Broadband Initiative, if broadband service is available to at least one household in a census block, then for mapping purposes, that census block is reported to have some level of broadband availability. As such, broadband availability at an exact address location cannot be guaranteed. Providers supplying more specific data than census block are displayed as such.

This map represents areas of broadband service availability determined by ongoing, in-depth technical analysis of provider networks and accommodations for the impact of external factors on service quality. Satellite broadband services may also be available.

Map users are encouraged to participate in improving broadband data granularity through data validation and field testing efforts. Learn more about this and other broadband mapping facts at www.connectkansas.org.

*This map is not a guarantee of coverage, contains areas with no service, and generally predicts where outdoor coverage is available. Equipment, topography and environment affect service.

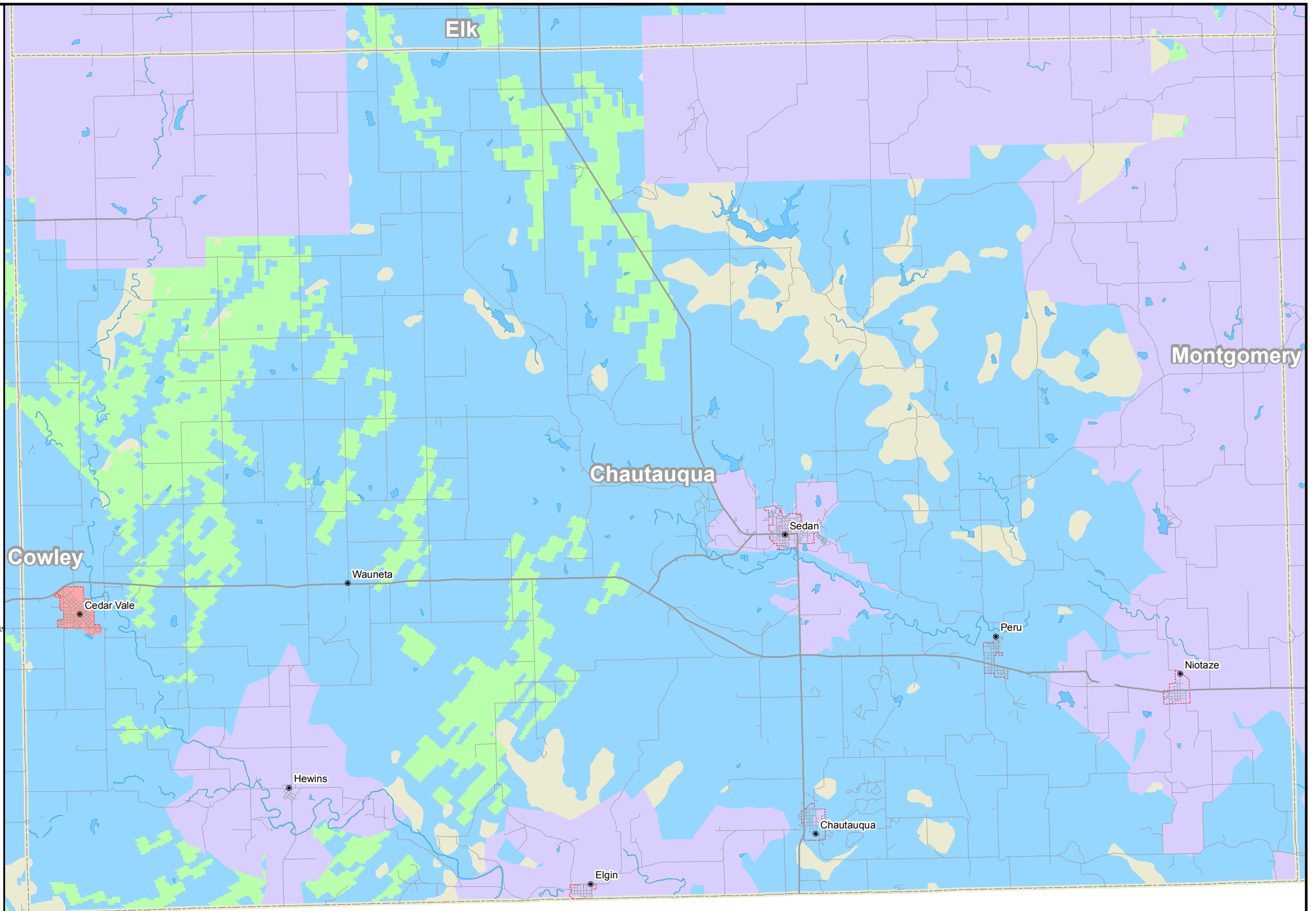


0 0.5 1 2 3 Miles

Symbology

In areas where multiple broadband providers offer service, this platform composite map stacks coverage display layers in the order presented below.

- City
- Interstate
- US Road
- Local Road
- - - Municipal Boundary
- - - County Boundary
- Water
- National/State Land
- Fiber Broadband Available
- Cable Broadband Available
- DSL Broadband Available
- Fixed Wireless Broadband Available
- Mobile Wireless Broadband Available*
- Unserviced Area



All Rights Reserved.

© Copyright 2011, Connected Nation, Washington, D.C. 20010.