

Density of Households Unserviced by a Broadband Provider by Census Block

Doniphan County
Kansas

Updated April 1, 2011

BETA Version

Submit questions or recommended changes to:
maps@connectkansas.org

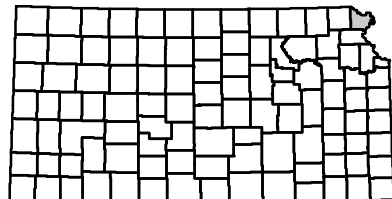


As required by the US Department of Commerce's State Broadband Data and Development Grant Program, if broadband service is available to at least one household in a census block, then for mapping purposes, that census block is reported to have some level of broadband availability. As such, broadband availability at an exact address location cannot be guaranteed. Providers supplying more specific data than census block are displayed as such.

*This does not include mobile wireless or satellite broadband services, which may be available.

This map represents areas of broadband service availability determined by ongoing, in-depth technical analysis of provider networks and accommodations for the impact of external factors on service quality. Satellite broadband services may also be available.

Map users are encouraged to participate in improving broadband data granularity through data validation and field testing efforts. Learn more about this and other broadband mapping facts at www.connectkansas.org.



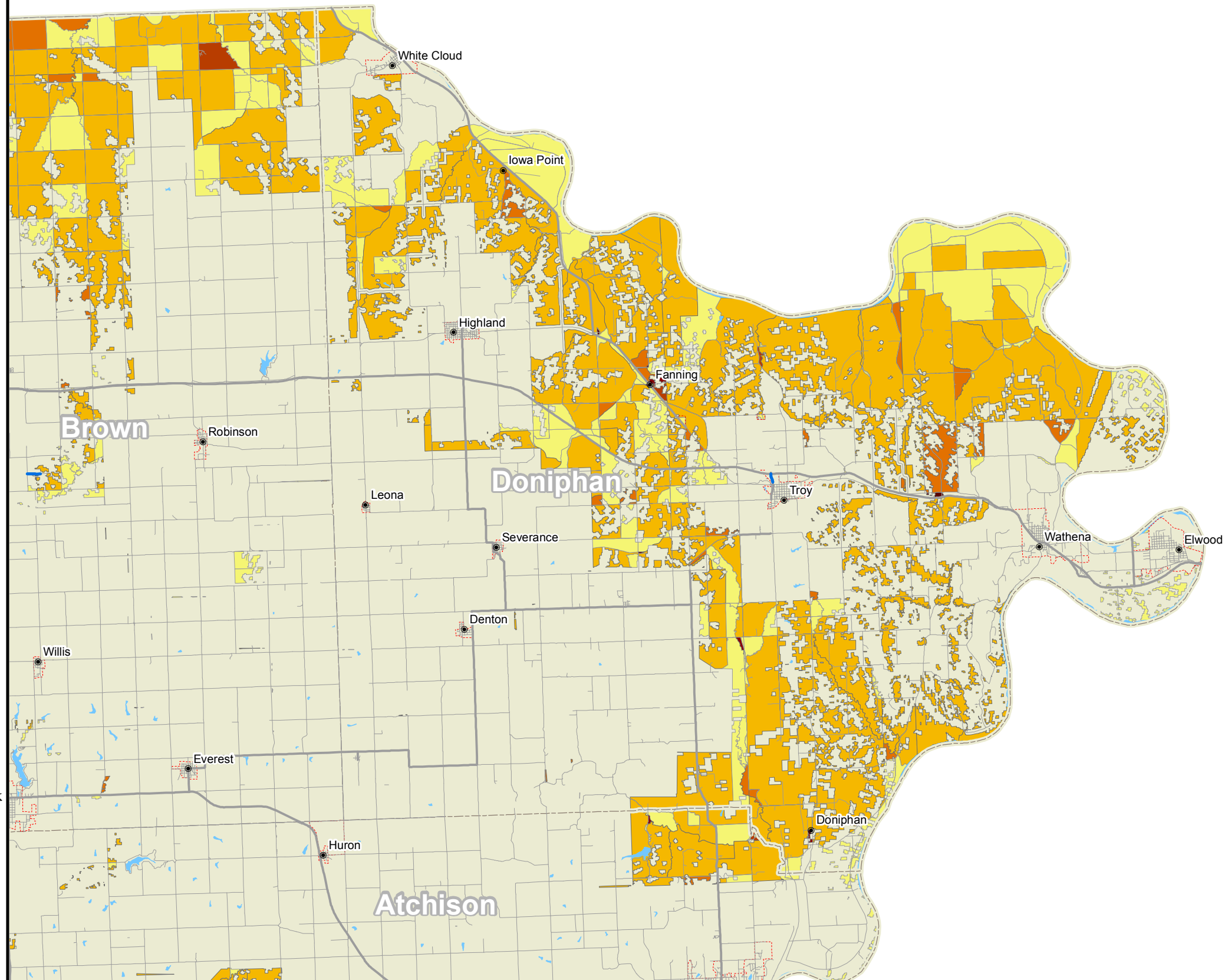
0 0.5 1 2 3 4 Miles

Symbology

- City
- Interstate
- US Road
- Local Road
- - - Municipal Boundary
- - - County Boundary
- Water
- National/State Land

Number of Unserviced Households per Square Mile, per Census Block

- 85.5+
- 40.50 - 85.49
- 20.50 - 40.49
- 8.50 - 20.49
- 0.06 - 8.49
- 0 - 0.05
- Broadband Available*



All Rights Reserved.

© Copyright 2011, Connected Nation, Washington, D.C. 20010