



CONNECTING KANSAS





Rural Telephone

- Cooperative Started in 1951
- 39 Exchanges in 17 Counties
- 7 Offices
- Headquarters – Lenora, Kansas
- Annual Revenues in Excess of \$45 Million

POWER
OF
ONE



NEXTECH
A Rural Telephone Company

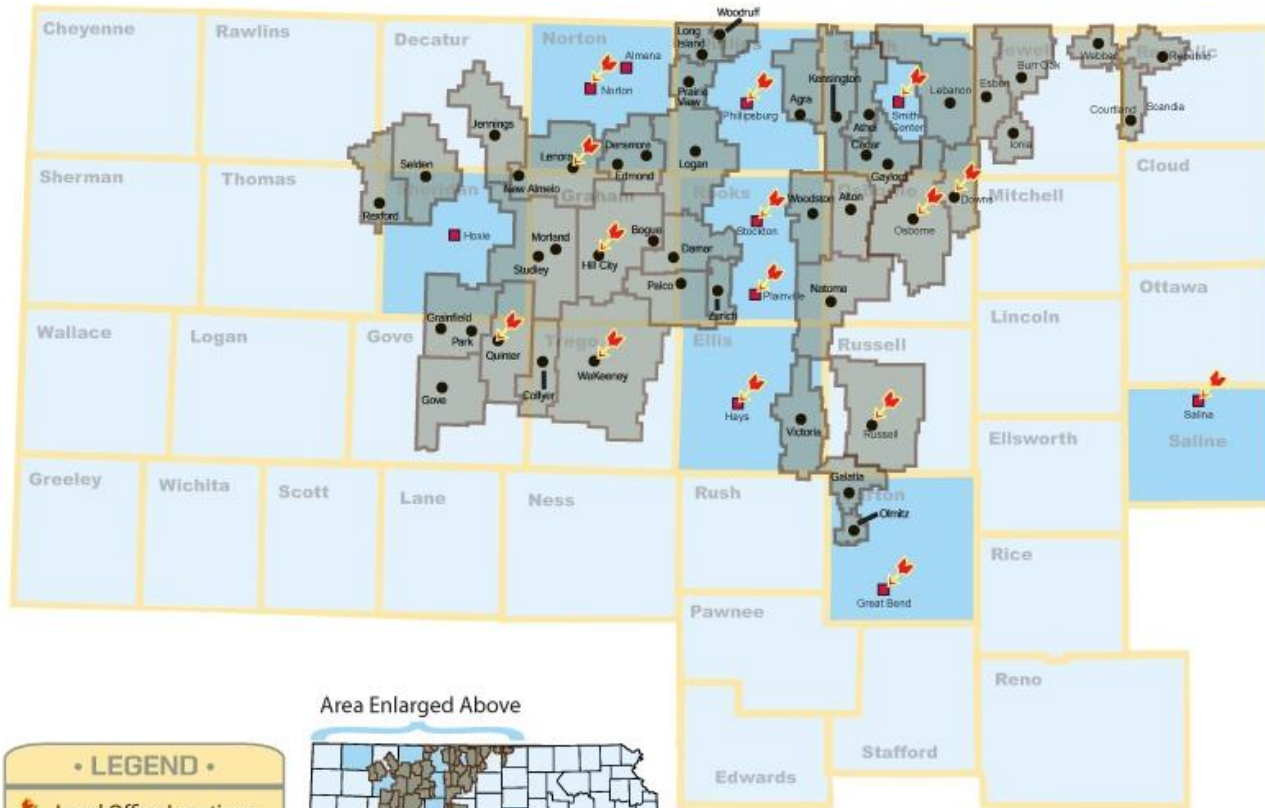


- **Wholly Owned Subsidiary of Rural Telephone**
- **14 CLEC Communities**
- **10 Offices**
- **Headquarters – Hays, Kansas**
- **Annual Revenues in Excess of \$40 Million**

POWER
OF
ONE





Coverage Map



Area Enlarged Above

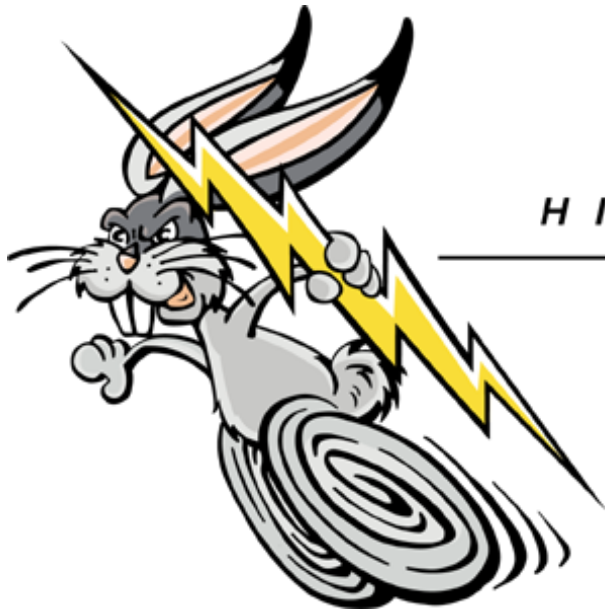
• LEGEND •

-  Local Office Locations
-  Nex-Tech Community
-  Rural Telephone Service Area



Rural Telephone & Nex-Tech
Coverage Map

Broadband Technologies



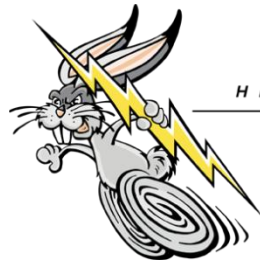
H I G H - S P E E D I N T E R N E T

**LIGHTNING
JACK™**

POWER
OF
ONE



NEXTECH
A Xcel Telephone Company



HIGH-SPEED INTERNET

**LIGHTNING
JACK™**

- **Cable Modem**
 - **DSL**
 - **Fixed Wireless**
 - **Satellite (Wild Blue)**
- **Fiber-To-The-Premise**
 - **WiMAX**

POWER
OF
ONE



PHONE



INTERNET



WIRELESS



TV



BUSINESS



SURF THE INTERNET **FREE!**

NEXTECH

625-7070
2418 Vine, Hays



www.nex-tech.com

- > Tiger Mat
- > Neighbors
- > Imperial Garden
- > Gutch's Restaurant
- > Augustine's Bakery
- > Hays Public Library
- > Precision Valley Golf
- > Hays Regional Airport
- > Semolino Coffee & Eatery
- > Rooftops Restaurant & Bar
- > Gutierrez Mexican Restaurant
- > Lb. Brewing Co. and Gella's Diner

POWER
OF
ONE



NEXTECH

A Rural Telephone Company



NEX-TECHsm wireless

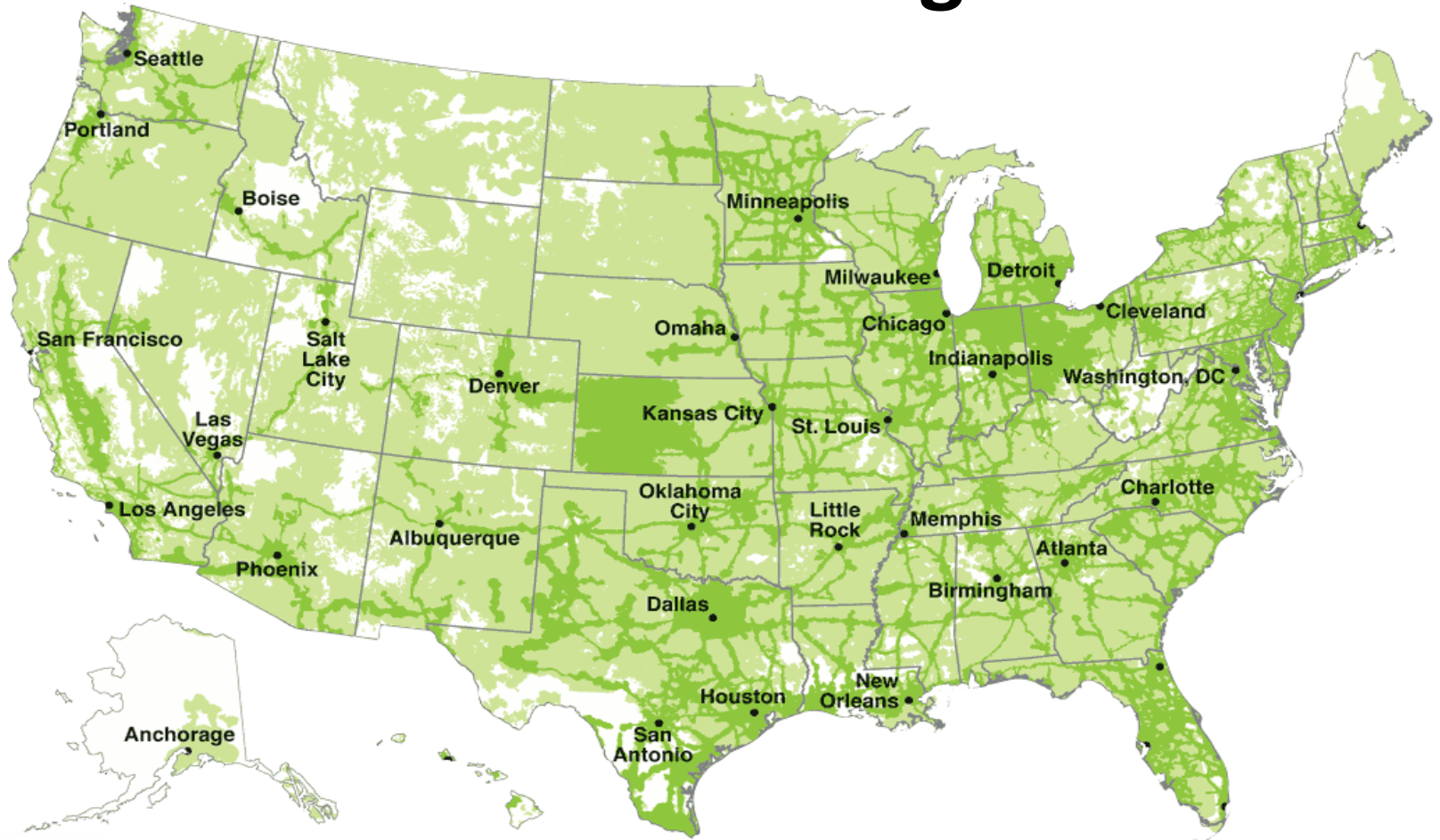
- Launched Services in Fall 2005
- Added Over 65 High-Tech Jobs
- Annual Revenues in Excess of \$47 Million

POWER
OF
ONE



NEXTECH
A Xcel Telephone Company

Nex-Tech Wireless Nationwide Coverage Area



POWER
OF
ONE



Broadband Stimulus Project



POWER
OF
ONE



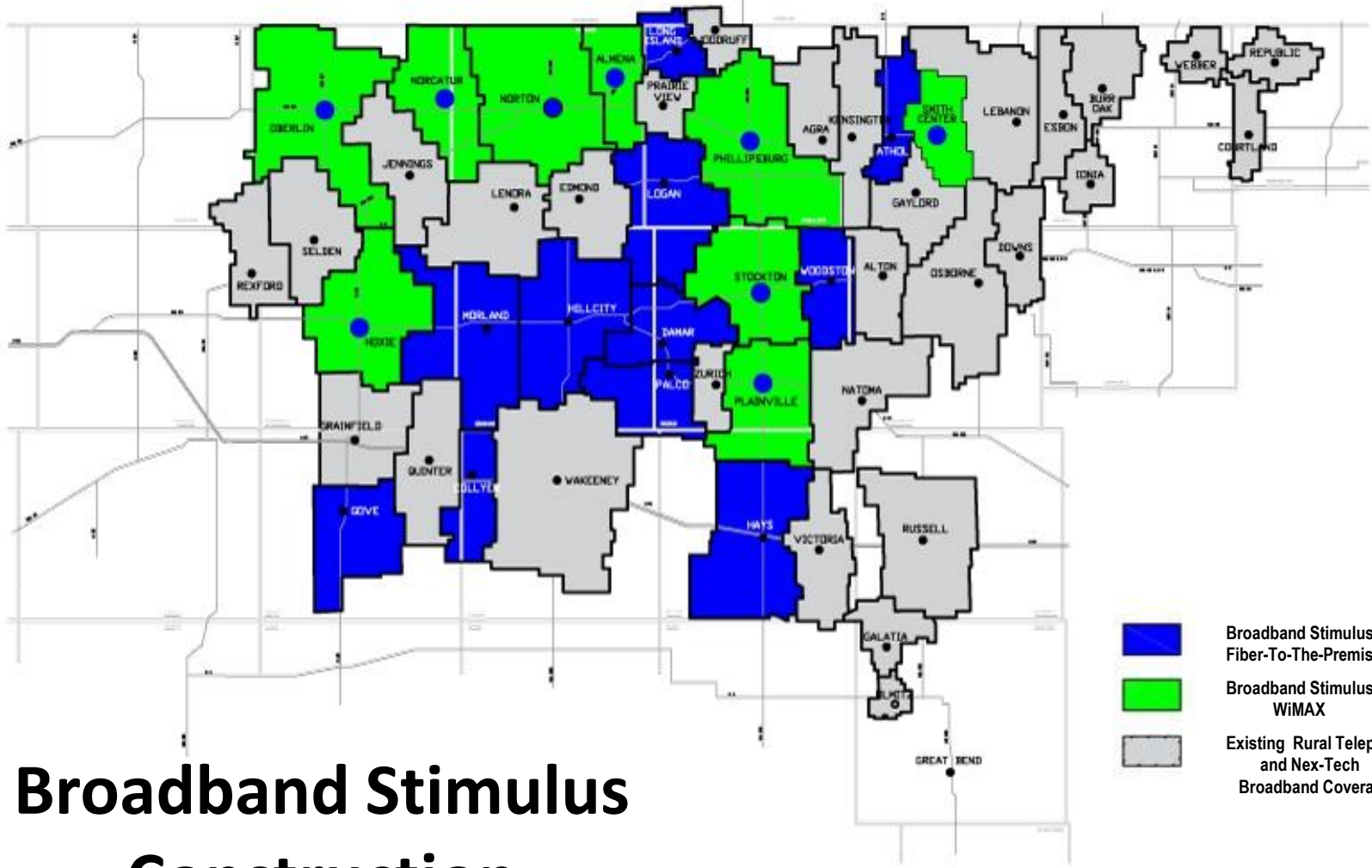
NEXTECH
A Rural Telephone Company

Broadband Stimulus Project

Funded by the American Recovery and Reinvestment Act

- **\$101 Million**
 - \$51 Million Loan / \$49 Million Grant
- **23,000 Households and Businesses**
- **335 Anchor Institutions**
- **21 Towns**
- **26 Rural Areas**
- **11 Counties**
- **4,600 Square Miles**





- Broadband Stimulus
Fiber-To-The-Premise
- Broadband Stimulus
WiMAX
- Existing Rural Telephone
and Nex-Tech
Broadband Coverage

Broadband Stimulus Construction

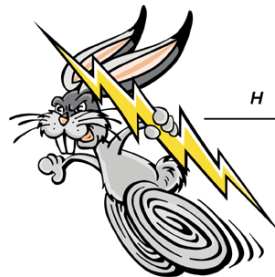
Economic Development



- Major impact on Western Kansas
- We will hire up to 17 new employees
- We estimate that this project will create and/or save approximately 400 jobs
- Contractors/Engineers will stay in local motels, eat at local restaurants and make purchases from local businesses

Broadband Stimulus Technologies

- Fiber-To-The-Premise
 - WiMAX



HIGH-SPEED INTERNET

**LIGHTNING
JACK™**

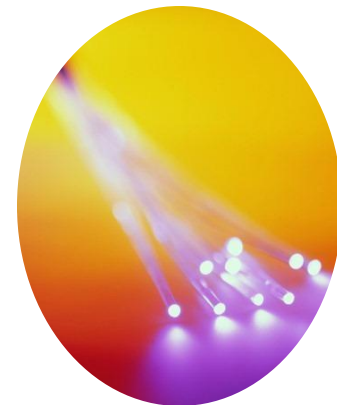
POWER
OF
ONE



NEXTECH
A Xcel Telephone Company

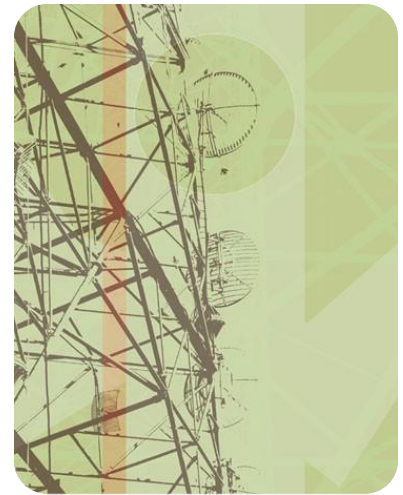
Fiber-To-The-Premise

- **High-Speed Broadband**
 - over 100 MB today and 1 GB in the future
- **Bandwidth capacity for carrying large files, medical images, multimedia programming, 3-D Hi-Def TV and more**
- **Levels the playing field for our small rural communities**



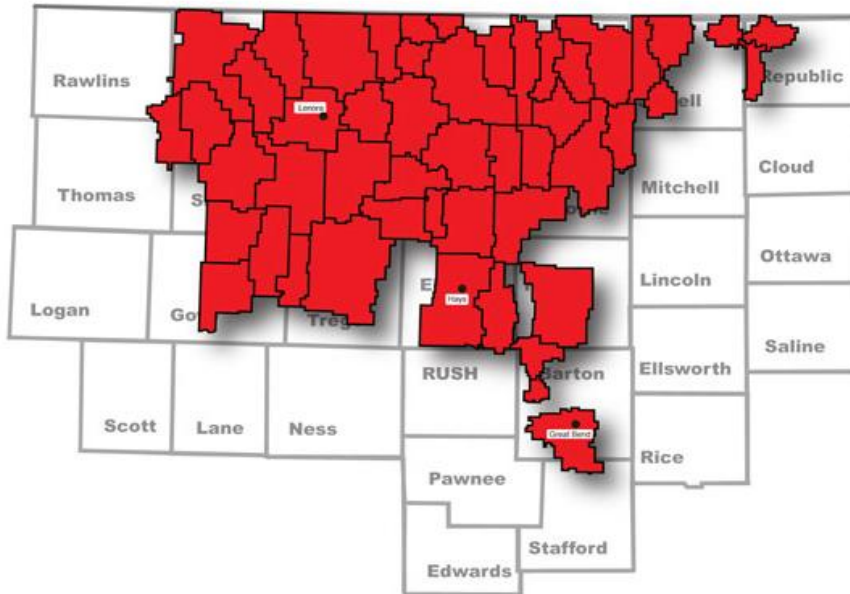
WiMAX

- **Affordable High-Speed Broadband services to rural areas where fiber is not feasible**
- **Delivers speeds comparable to DSL and cable modem service**
- **Multiple towers in the rural areas**
- **Not weather affected like satellite services**



Broadband Coverage

(After Completion of Project)



- 39,158 Households and Businesses
 - 9,307 Square Miles
 - 60 Towns
 - 17 Counties

Project Update

- Shovel Ready
- First company to use Broadband Stimulus funds to connect broadband customers

Numbers

F-T-T-P - 897

WiMAX - 5



Is High-Speed Broadband important for your business?



POWER
OF
ONE



NEXTECH
A Rural Telephone Company

Leveling the Playing Field

- Online Ordering
- Online Auctions
- Telecommuting
- Online Education
- Healthcare Monitoring
- Telemedicine
- Quality of Life





Jeff Wick
Chief Operating Officer
jwick@nex-tech.com

POWER
OF
ONE

